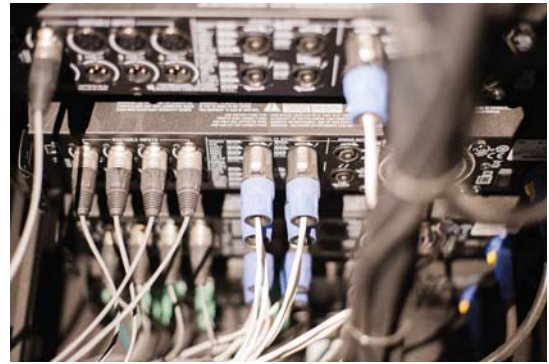


EQUIPMENT

- 1 Apple iPad Air 2 16GB
- 1 BSS Soundweb London BLU-100 12x8 signal processor
- 1 BSS Soundweb London BLU-BOB1 breakout box output expander
- 1 C2G 25' in-wall HDMI cable
- 1 C2G 2m Velocity TOSLINK optical digital cable
- 4 C2G 3' black HDMI cables
- 5 C2G 5' black Cat5e patch cables
- 5 C2G 7' black Cat5e patch cables
- 1 C2G Toslink to analog audio converter (DAC)
- 1 C2G HDMI digital passthrough wall plate
- 3 Chief LTM1U large Fusion micro-adjustable tilt wall mounts
- 3 Crestron C2N-IO control port expansion modules
- 1 Crestron CNPWS-75 75W Cresnet power supply
- 1 Crestron CRESNET-NP-TL-B250 Cresnet control cable, non-plenum
- 1 Crestron RMC3 3-Series room media controller
- 1 Extron ASA 141 passive audio summing adapter
- 3 Furman P-8 Pro C power conditioners
- 1 iPort 70095 control mount for iPad Air 2
- 2 LG Electronics 65LX341C 65" Edge LED Commercial Lite integrated HDTV
- 1 LG Electronics 79UX340C 79" UX340C Commercial Lite Ultra-HDTV
- 2 Middle Atlantic 1RU vented rackshelves
- 1 Middle Atlantic 2RU vented rackshelf
- 1 Middle Atlantic PTRK-2726 PTRK Series rack
- 1 Pakedge SX-24P16 24-port managed PoE switch, rear-facing
- 1 Pakedge WK-1 2x2 AC wireless access point
- 1 Pico Digital PD100 HD IP encoder
- 1 Pioneer DJ DDJ-SZ2 4-channel controller for Serato DJ
- 6 QSC AD-S10T surface-mount speakers
- 2 QSC AD-S112sw 12" subs

South Central AV stayed with copper for the new venue's audio, using 10-gauge wire for the dance area because of the amplifiers' high wattage.



- 11 QSC AD-YMS10-BK yoke mounts
- 1 QSC CXD4.3 processing amp
- 6 QSC E15 15" 2-way passive speakers
- 2 QSC GP218-sw dual 18" subs
- 6 QSC M8 Eyebolt Kit-A eyebolt suspension kits
- 4 QSC PLD4.5 processing amps
- 3 Technicolor DCI401MCS Pro:Idiom security terminators
- West Penn 10/2 stranded plenum
- West Penn 12/2 stranded plenum
- West Penn 14/2 stranded plenum
- West Penn 22/4 stranded plenum
- West Penn Cat5e plenum
- West Penn Cat6 plenum
- West Penn RG-6 plenum

List is edited from information supplied by South Central AV.

THE FASTER, EASIER WAY TO DRAW, & DO MORE

Work smarter with the NEW VERSION of the leading design/documentation tool for AV professionals: **Stardraw Design 7.2**

NEW

- **NEW!** PDF Import – create editable drawings from the PDF files you receive
- **NEW!** 10,000 symbols for Architectural Layouts using InfoComm/CEDIA/CTA standard J-STD-710
- **NEW!** Define your own drawing templates
- **NEW!** Project-wide Cable Schedule tool
- **NEW!** Cloud-based licensing for flexible deployment

NEW
7.2

- Create schematics, layouts, plans and reports in one integrated package
- Smart, task-oriented drawing modules make system design quick and easy
- Drag and drop, with a library of almost 100,000 symbols from more than 750 manufacturers
- AutoCAD compatible – open, edit and save DWG files without using AutoCAD

www.stardraw.com/SandC

STARDRAW
System tools DESIGN

